

This drawing should not be scaled. Dimensions to be verified on site.  
Any discrepancies should be referred to the Engineer prior to work being put in hand.  
This drawing is the property of Waterman Moylan Consulting Engineers Limited and is  
issued on the condition that it is not copied, reproduced, retained or disclosed to any unauthorized person, either  
wholly or in part without the consent in writing of  
Waterman Moylan Consulting Engineers Limited  
Block S, East Point Business Park, Dublin, D03 H3F4, Ireland +353 1 664 8900

- NOTES:
- DO NOT SCALE. USE FIGURED DIMENSIONS ONLY.
  - THIS DRAWING IS TO BE READ IN CONJUNCTION WITH ALL OTHER RELEVANT ARCHITECTURAL AND ENGINEERING DRAWINGS.

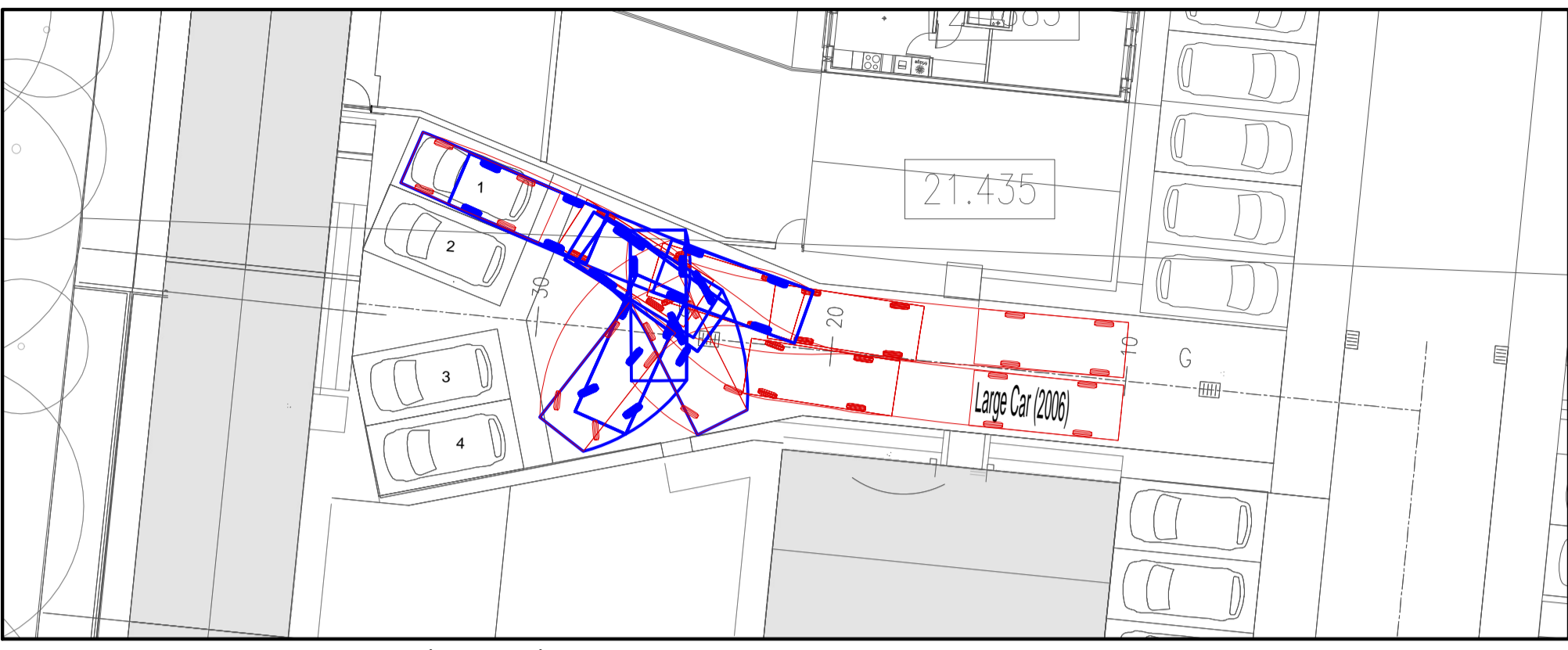
**LEGEND:**

Large Car (2006)	5.079m
Overall Length	1.926m
Overall Width	1.631m
Min Body Ground Clearance	0.310m
Max Track Width	1.631m
Lock-to-lock time	4.008
Curb to Curb Turning Radius	5.900m

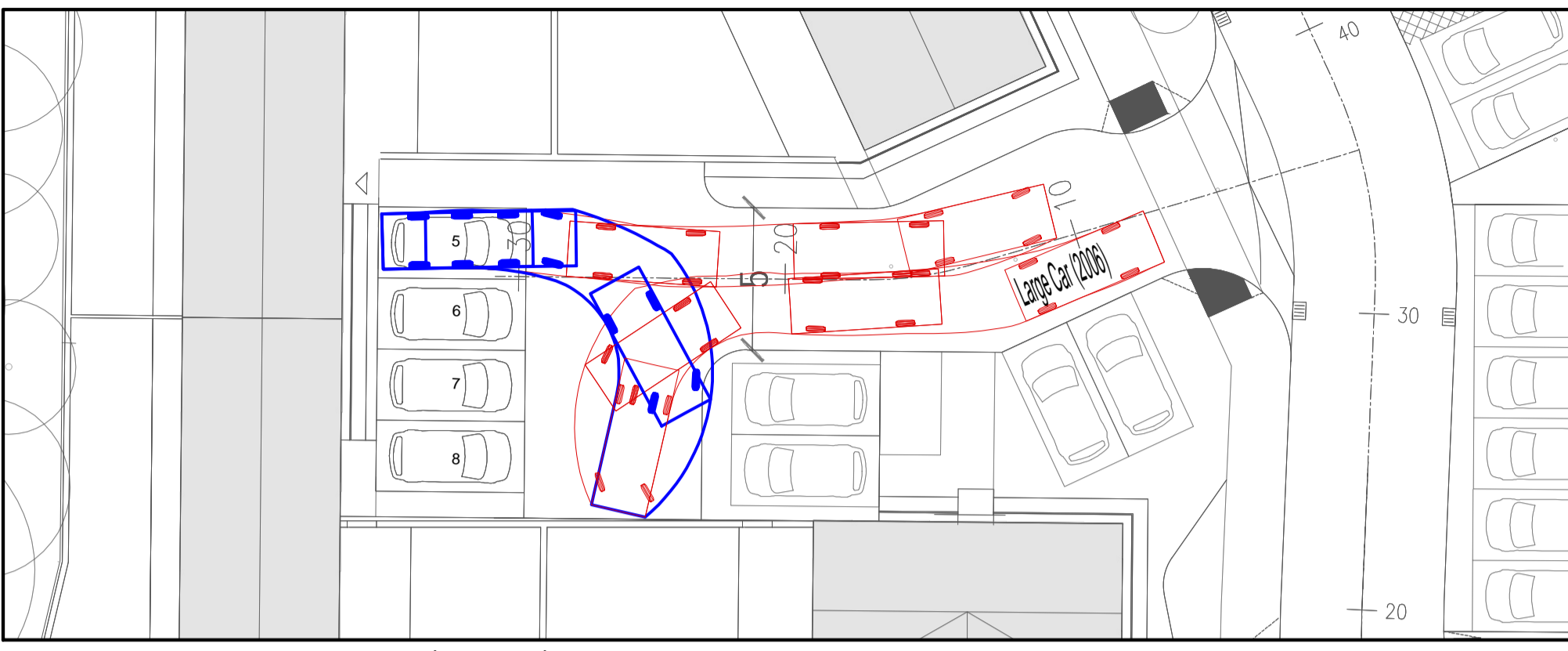
Note: Forward Swept Path Analysis Shown in Red  
Reverse Swept Path in Blue.



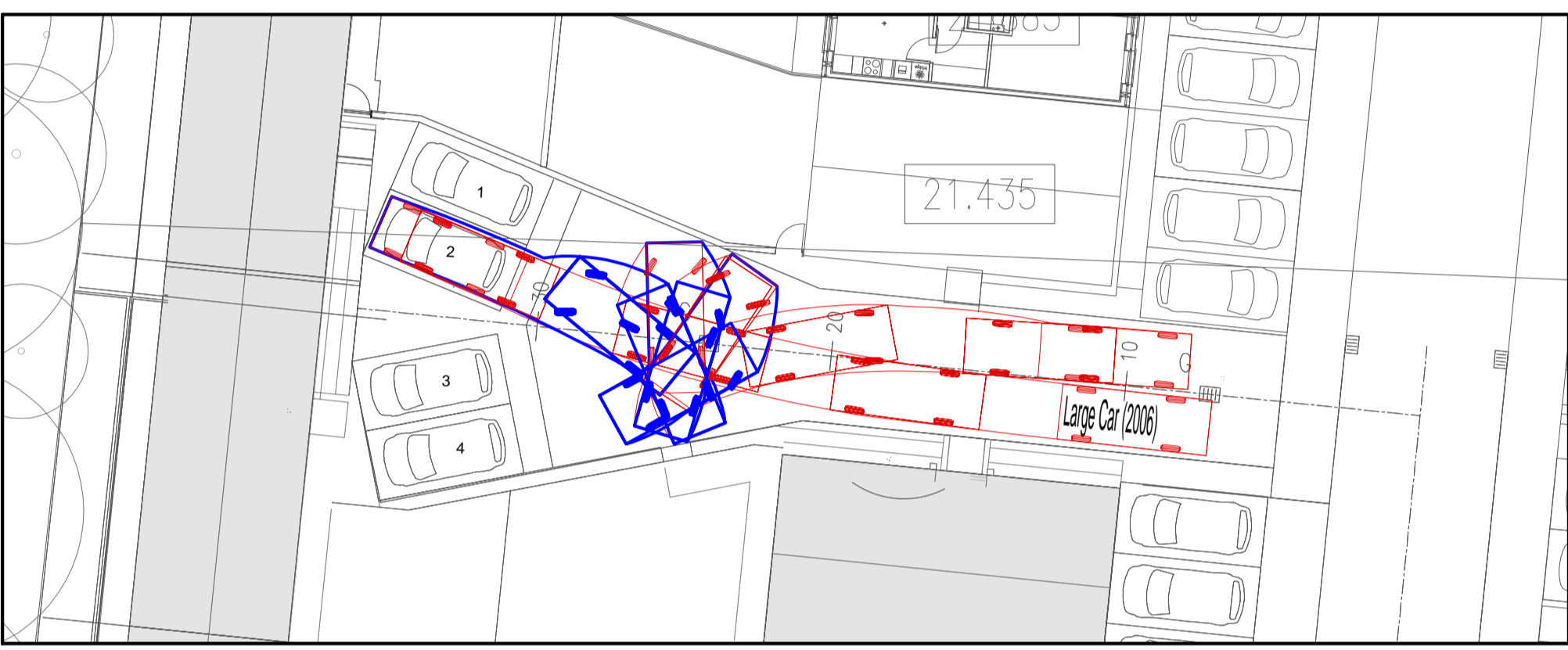
**KEYPLAN**  
SCALE 1:1000



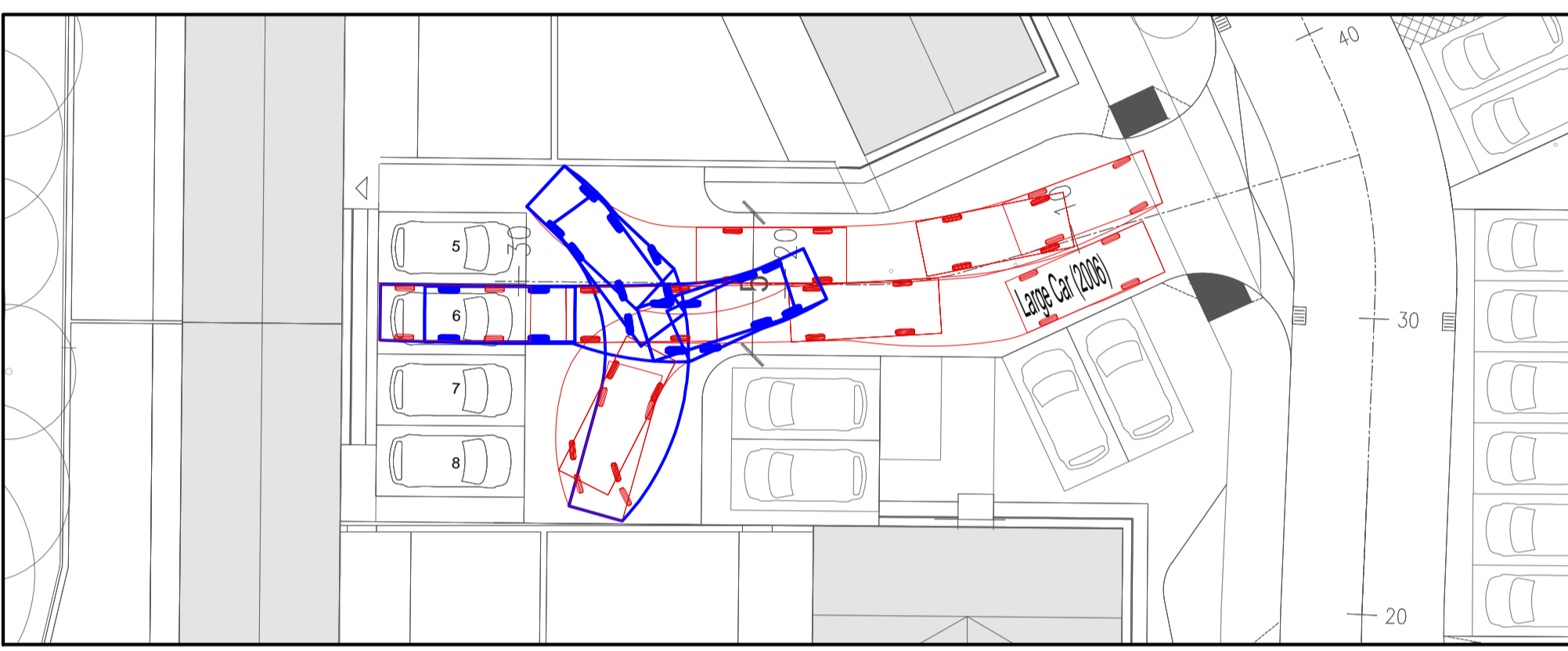
**COURTYARD 1 (BAY 1) FORWARD ENTRY VEHICLE TURNING MOVEMENTS**  
SCALE 1:200



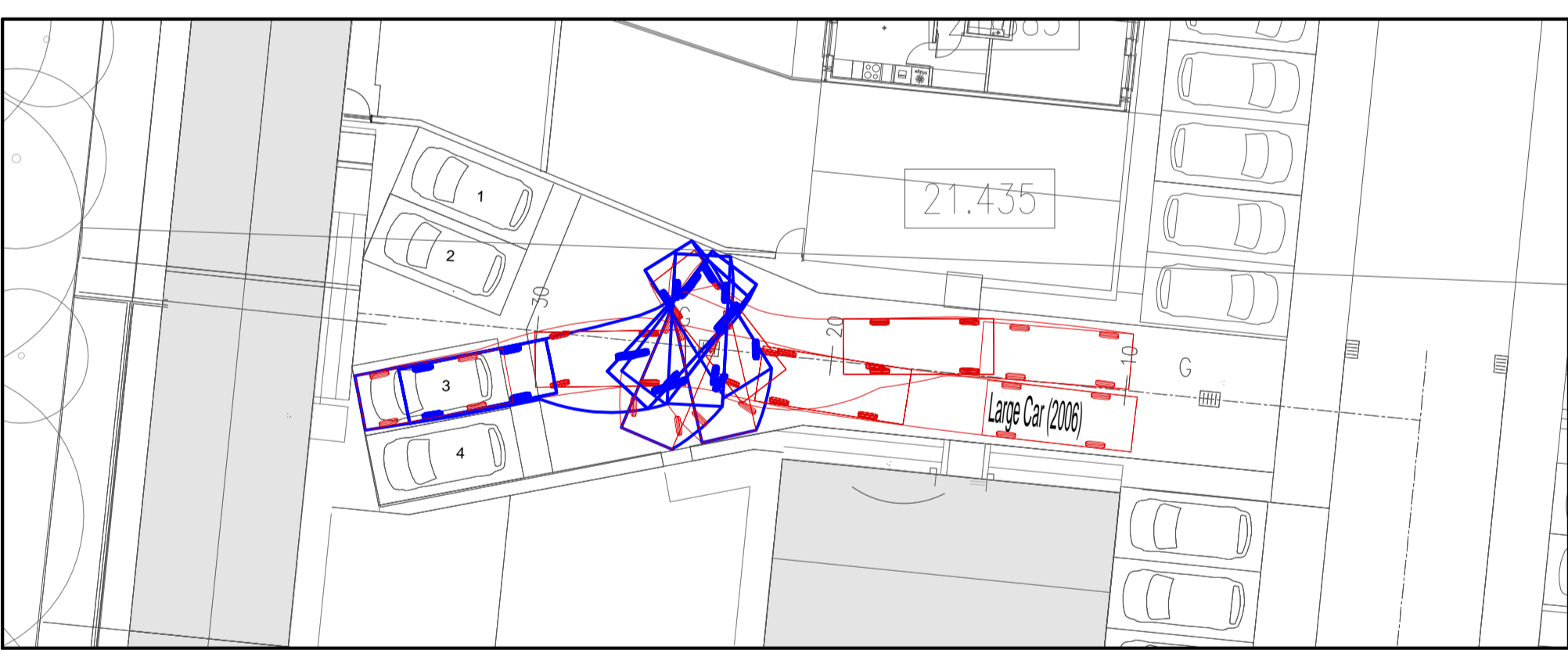
**COURTYARD 2 (BAY 5) REVERSE ENTRY VEHICLE TURNING MOVEMENTS**  
SCALE 1:200



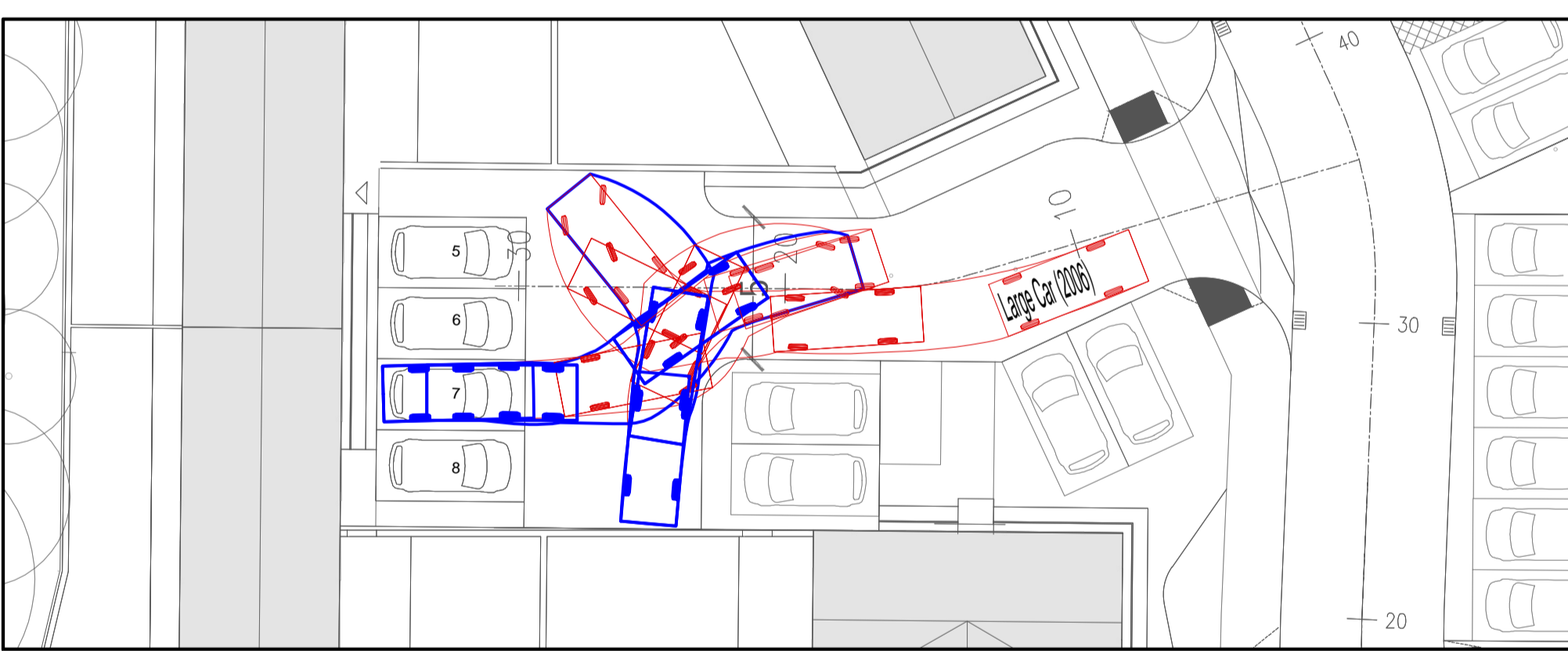
**COURTYARD 1 (BAY 2) FORWARD VEHICLE TURNING MOVEMENTS**  
SCALE 1:200



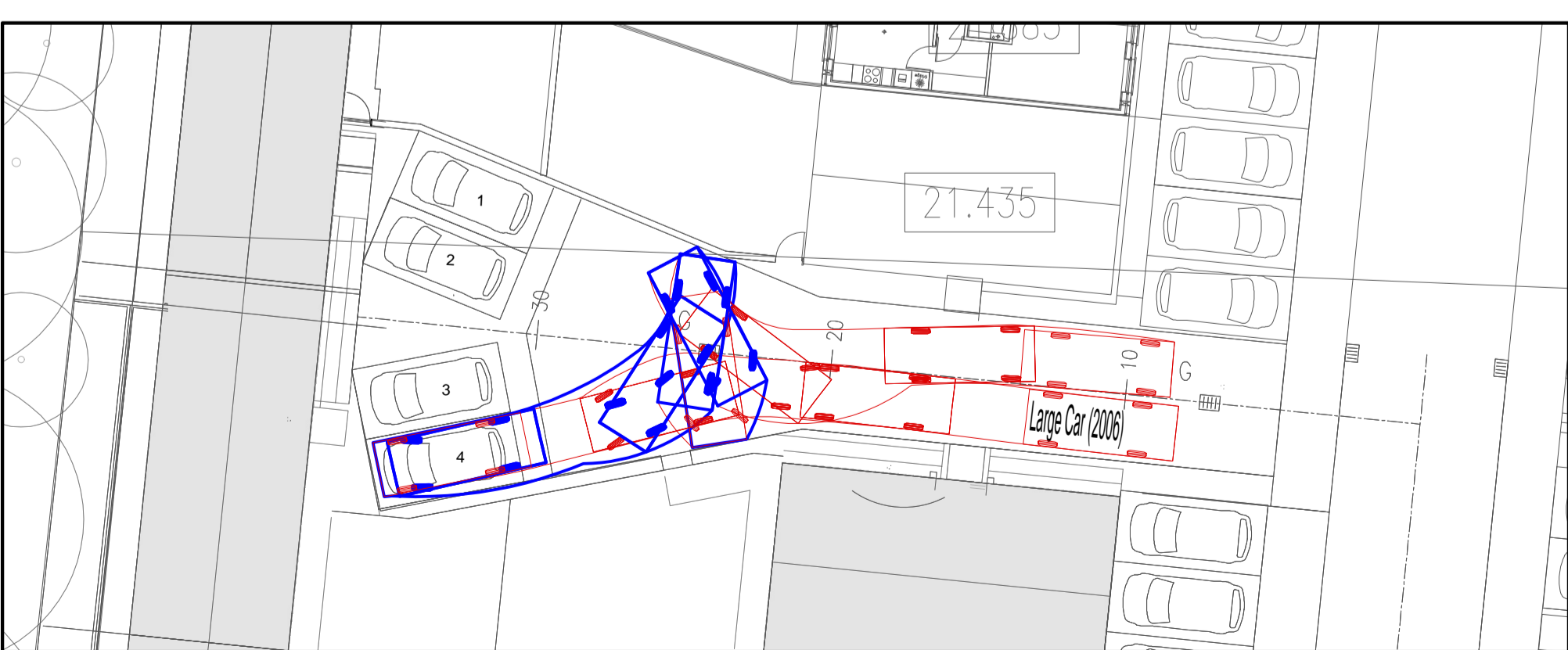
**COURTYARD 2 (BAY 6) REVERSE ENTRY VEHICLE TURNING MOVEMENTS**  
SCALE 1:200



**COURTYARD 1 (BAY 3) FORWARD VEHICLE TURNING MOVEMENTS**  
SCALE 1:200



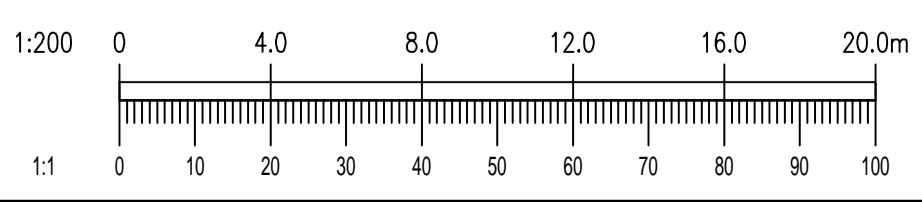
**COURTYARD 2 (BAY 7) REVERSE ENTRY VEHICLE TURNING MOVEMENTS**  
SCALE 1:200



**COURTYARD 1 (BAY 4) FORWARD VEHICLE TURNING MOVEMENTS**  
SCALE 1:200



**COURTYARD 2 (BAY 8) REVERSE ENTRY VEHICLE TURNING MOVEMENTS**  
SCALE 1:200



Rev	Date	Description	By	CHK
Amendments				

PROPOSED RESIDENTIAL DEVELOPMENT  
AT OLD SLANE ROAD,  
DROGHEDA CO. LOUTH

**SWEPT PATH ANALYSIS FOR A  
LARGE CAR**

Client: LAGAN HOMES TULLYALLEN LTD.



BLOCK S, EASTPOINT BUSINESS PARK, ALFIE BYRNE ROAD,  
DUBLIN D03 H3F4 IRELAND. Tel: (01) 664 8900  
Email: info@waterman-moylan.ie www.waterman-moylan.ie

<b>PLANNING</b>			
Designed By	NS	Approved	MD
Drawn By	NS	Date	AUGUST 2025
Project	Originator	Volume	Level
OSR-WMC-PH3-00-DR-C-4131			

Drawing Location: W:\projects\2025\07 Old Slane Road\Drawings\Waterman Moylan\Civil\Autocad Drawings\Phase 3\OSR-WMC-PH3-00-DR-C-4131 Swept Path Analysis for a Large Car.dwg  
Date: Aug 26, 2025 2:47pm